



Intercompany Integration Solution for SAP Business One

Master Data Replication

TABLE OF CONTENTS

| | |
|--|----------|
| OVERVIEW | 3 |
| Flexible Replication of Master data | 3 |
| Company Template Configuration | 3 |
| Selective Replication | 4 |
| Global Data Distribution | 5 |
| Global Data Authorization | 5 |
| Master Data Supported For Replication | 6 |
| BUSINESS BENEFITS..... | 8 |

OVERVIEW

Growing organizations that control more than one legal business entity are sometimes faced with the challenge of how to share data between partner companies.

Master data such as item masters and business partner master data should be in sync across all organizations, so that the same data is used across the companies. This establishes a common language among business entities for intercompany transactions. It also provides a common frame of reference for analyzing the performance of a business unit, interpreting reports from two different subsidiaries, and gaining a consolidated view such as aggregate spend or inventory holdings across all operations. Having common master data eliminates the manual effort associated with aggregating data across your organizations. Intercompany integration solution ensures that the master data being used across the companies is consistent.

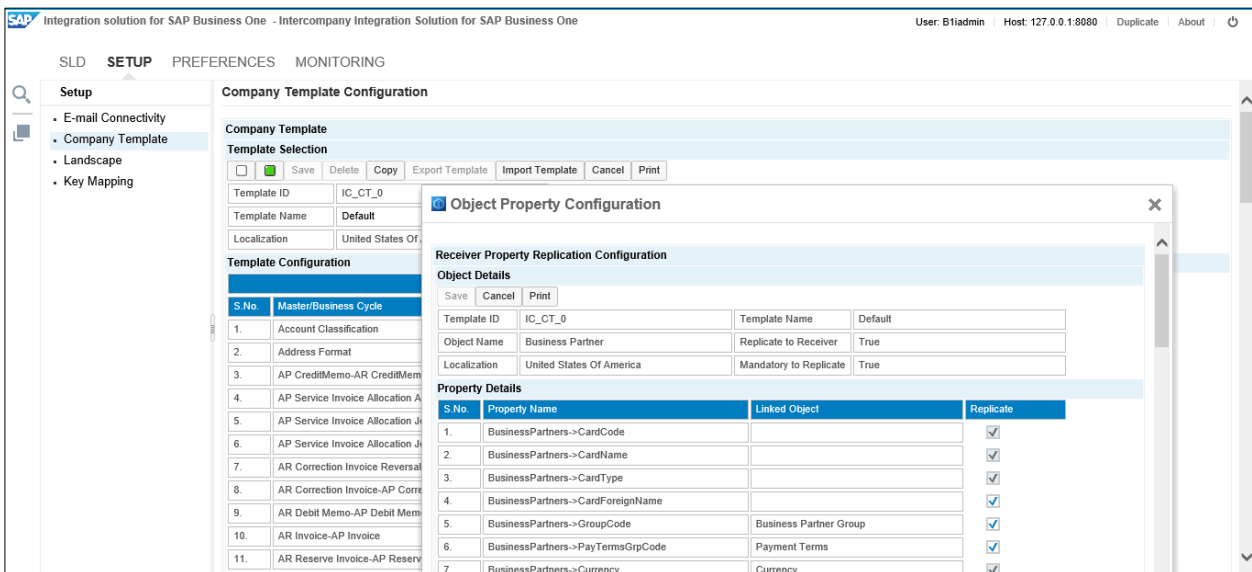
The intercompany solution supports the replication of essential master data across partner companies such as Freight Master, Currency Master, Payment Terms, Item Master Data, Business Partner Master Data, etc.

Flexible Replication of Master data

Intercompany solution provides the flexibility in master data replication. User can decide the masters and their fields that are to be replicated across Partners Companies.

Company Template Configuration

With the Company Template configuration, user can specify the master(s) that needs to be sent from one company to the others. For each master, user can also specify the field list to be replicated between the SAP Business One Companies.



Selective Replication

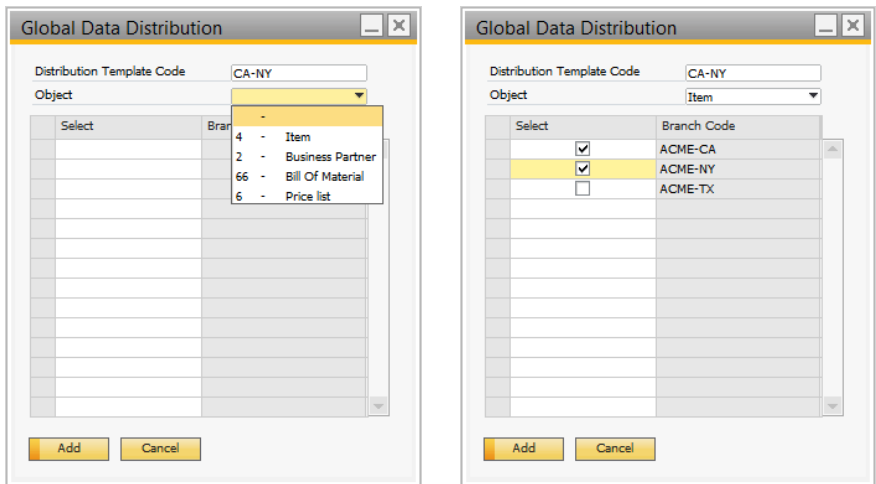
For item master data, business partner master data, bill of materials and price list masters, the user can choose which specific records are to be shared between SAP Business One companies.

The screenshot shows the 'Item Master Data' window. The 'Description' field is 'J.B. Officeprint 1420'. The 'Global Item' checkbox is checked and highlighted with a red box. Other fields include 'Item No.' (A00001), 'Item Type' (Items), 'Item Group' (J.B. Printers), 'UoM Group' (Manual), and 'Price List' (Base Price). The 'Inventory Item', 'Sales Item', and 'Purchase Item' checkboxes are also checked. The 'Advanced Rule Type' is set to 'Warehouse'.

The screenshot shows the 'Business Partner Master Data' window. The 'Code' is 'C20000' and the 'Name' is 'Maxi-Teq'. The 'Global Business Partner' checkbox is checked and highlighted with a red box. The 'Currency' is 'US Dollar' and the 'Federal Tax ID' is 'US25-987634'. The 'Accounting' section shows 'Local Currency' with a balance of 29,446.80. The 'Properties' section includes 'Language' (English) and 'Sales Employee' (Sales Manager). The 'Advanced Rule Type' is set to 'Warehouse'.

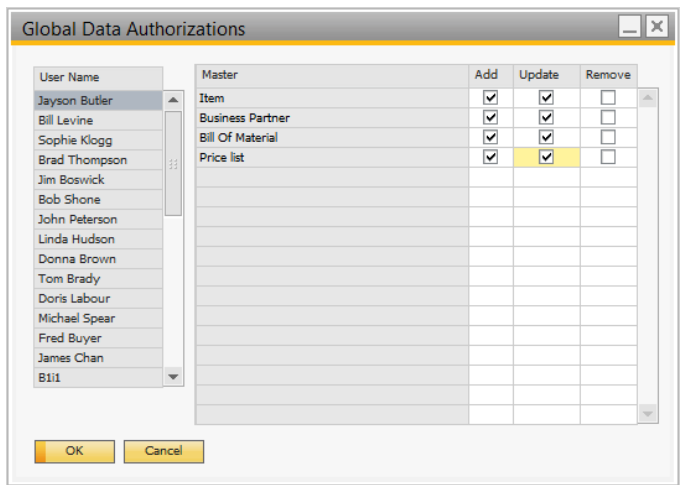
Global Data Distribution

Users can define data distribution templates to replicate specific global business partners, global item masters, global bill of materials, and global price lists to specific branch companies.



Global Data Authorization

Global data authorization allows administrators to define users who will be allowed to add, update, or remove global master data.



Master Data Supported For Replication

By default intercompany solution replicates following masters in all localizations of SAP Business One.

| Master Data | |
|--------------------------------------|------------------------------|
| Freight | County |
| Currencies | Dimensions |
| Customer Group | Profit Center Setup |
| Vendor Group | Distribution Rules Setup |
| Item Group | Profit Center Type |
| Price Lists | Contract Templates |
| Period and Volume Discount | Item Master Data |
| Special Prices for Business Partners | Business Partner Master Data |
| Discount Groups | Bill of Materials |
| Exchange Rates | Customer Equipment Card |
| Length and Width UOM | Service Contract |
| Weight UOM | Manufacturers |
| Account Classification | Item Property |
| Payment terms | Projects |
| Cash Discount | Unit of Measure Groups |
| Countries | Units of Measure |
| States | Package Types |

User can use company template configuration feature to replicate following additional masters.

| Master Data | |
|------------------------------|---------------------------|
| Shipping Type | Portfolio |
| Credit Cards | Instruction |
| Business Partner Priorities | Indicators |
| Business Partner Properties | Banks |
| Bank Charges Allocation Code | House Bank Accounts |
| Service Codes | Fuel Group |
| Customs Group | Beverage Commercial Brand |
| Payment Blocks | Fuel Code |
| Material Group | Beverage Group |
| Address Format | Beverage Table |
| NCM Code | Beverage Combination |
| DNF Code | Name |
| Service Group | Income Nature Setup |
| Dunning Terms | SPED Profile Setup |
| Holiday Dates | Occurrence Code |
| Sales Person | Movement Code |
| Commission Groups | CNAE Code |
| Language | Product Source Codes |
| Payment Methods | Translation |
| File Format | Industry |
| Document Type | E-Mail Group |

BUSINESS BENEFITS

- Improvement in quality and accuracy of data
- Increase productivity by reduction in workload
- Overall increase in organizational efficiencies
- Minimize errors in master data entry across the organization

© 2017 SAP SE or an SAP affiliate company. All rights reserved.
No part of this publication may be reproduced or transmitted in any form or for any purpose without the express permission of SAP SE or an SAP affiliate company.

SAP and other SAP products and services mentioned herein as well as their respective logos are trademarks or registered trademarks of SAP SE (or an SAP affiliate company) in Germany and other countries. Please see <http://www.sap.com/corporate-en/legal/copyright/index.epx#trademark> for additional trademark information and notices. Some software products marketed by SAP SE and its distributors contain proprietary software components of other software vendors.

National product specifications may vary.

These materials are provided by SAP SE or an SAP affiliate company for informational purposes only, without representation or warranty of any kind, and SAP SE or its affiliated companies shall not be liable for errors or omissions with respect to the materials. The only warranties for SAP SE or SAP affiliate company products and services are those that are set forth in the express warranty statements accompanying such products and services, if any. Nothing herein should be construed as constituting an additional warranty.

In particular, SAP SE or its affiliated companies have no obligation to pursue any course of business outlined in this document or any related presentation, or to develop or release any functionality mentioned therein. This document, or any related presentation, and SAP SE's or its affiliated companies' strategy and possible future developments, products, and/or platform directions and functionality are all subject to change and may be changed by SAP SE or its affiliated companies at any time for any reason without notice. The information in this document is not a commitment, promise, or legal obligation to deliver any material, code, or functionality. All forward-looking statements are subject to various risks and uncertainties that could cause actual results to differ materially from expectations. Readers are cautioned not to place undue reliance on these forward-looking statements, which speak only as of their dates, and they should not be relied upon in making purchasing decisions.

